

NEW



## ROTATING TELESCOPIC HANDLER | 5.5-21 ROTO

Gross power: 108kW (145hp) | Lift capacity: 5,500kg | Maximum lift height: 20.5m





## ROUND THE CLOCK **VERSATILITY.**

FROM THE WORLD'S LEADING MANUFACTURER OF TELESCOPIC HANDLERS WITH 40 YEARS OF EXPERIENCE, THE NEW JCB ROTO COMBINES THE REACH AND LIFTING CAPABILITY OF A CRANE WITH THE MANOEUVRABILITY OF A TELEHANDLER AND THE ACCESS CAPABILITY OF A MOBILE ELEVATED WORK PLATFORM.

**1** The new JCB Hydraload offers unrivalled ease of use, with a familiar layout and a single screen load management system. Operation is possible from the cab, man basket or fully remote.

JCB's automate technology gives one-touch auto deploy, stow and level of the outriggers, whilst still allowing for full hydraulic function. Speed profiles allow the operator to set the speed of each hydraulic service for ultimate controllability, allowing the operator to focus fully on the lift.


**2** Maximum productivity is offered by the JCB Hydraload with full 360 rotation with 5.5T maximum capacity and a top speed of 40kph. The variable displacement pump offers outstanding multifunctioning with fast winch speeds, best in class outrigger deploy and stow times. This performance allows the JCB Hydraload to compete with a mobile crane at a fraction of the cost and is perfectly suited to today's heavy lift requirements on site.

**3** The low boom design offers maximum visibility which can be further enhanced with optional camera kits providing protection for those working both in and around the machine.

Operators can have the confidence to handle any load thanks to the full load management system with configurable envelope limits for working in confined spaces.





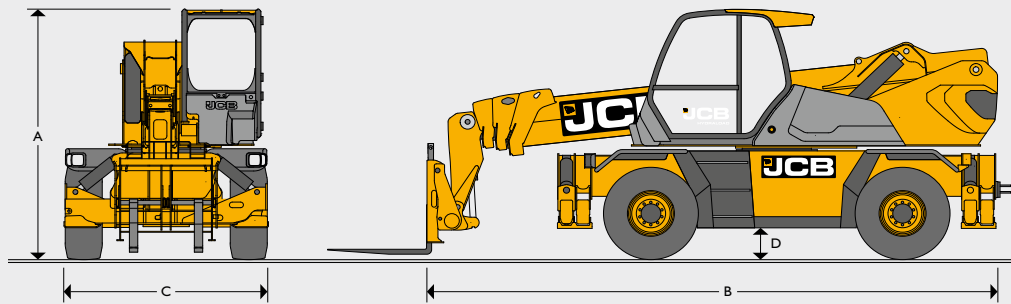


With a 20.5m maximum lift height and 5500kg lift capacity the Roto boasts the industry's best-in-class load chart.

The 160 l/min variable displacement pump gives smooth multifunctional control.

Automatic levelling ensures the stabilisation of the Roto is quick and safe.

2-Speed Hydrostatic drive enables fine smooth control of the Roto.


**DIMENSIONS**

|          |  |    |       |
|----------|--|----|-------|
| <b>A</b> | Overall height   | m  | 3.08  |
| <b>B</b> | Overall length   | m  | 6.92  |
| <b>C</b> | Overall width  | m  | 2.45  |
| <b>D</b> | Ground clearance                                       | m  | 0.35  |
|          | Max lift height  | m  | 20.5  |
|          | Max reach  | m  | 17.8  |
|          | Max lift capacity                                      | kg | 5500  |
|          | Capacity at max height                                 | kg | 2500  |
|          | Capacity at max reach                                  | kg | 850   |
|          | Overall weight   | kg | 17960 |
|          | Front axle unladen weight (boom retracted and lowered) | kg | 8260  |
|          | Rear axle unladen weight (boom retracted and lowered)  | kg | 9700  |
|          | Turning radius (over tyres)                            | m  | 4.29  |

**ENGINE**

|                |         |                                      |
|----------------|---------|--------------------------------------|
| Type           |         | JCB ECOMax T4F                       |
| Displacement   | litres  | 4.8                                  |
| Gross power    | kW (hp) | 108 (145) @ 2200rpm                  |
| Max torque     | Nm      | 560 @ 1500rpm                        |
| Cylinders      |         | 4 in line                            |
| Fuel           |         | Diesel direct injection turbocharged |
| Fuel tank      | litres  | 190                                  |
| AdBlue tank    | litres  | 26                                   |
| Gradeability   |         | 40%                                  |
| Batteries      | volts   | 2 x 12                               |
| Cooling system |         | Water – intercooler                  |

**TRANSMISSION AND HYDRAULICS**

|                    |  |                                  |
|--------------------|--|----------------------------------|
| Transmission model |  | Bosch Rexroth                    |
| Transmission type  |  | Two-speed hydrostatic            |
| Drive wheels       |  | 4-wheel drive                    |
| Steering mode      |  | 4-wheel steer – 3 steering modes |

**PERFORMANCE**

|                  |  |
|------------------|--|
| Rotation         | Continuous 360° rotation of turret mounted on external slew ring with in cab manual slew lock. |
| Max travel speed | 40kph  |

**AXLES**

|             |   |
|-------------|---|
| Type        | Dana Spicer – with epicyclic reduction gear.                    |
| Model       | 213   |
| Oscillation | ±8° oscillation with automatic hydraulic lock out on rear axle. |

**BRAKES**

|           |  |
|-----------|--|
| Type      | Power brakes hydraulically activated, oil-immersed multi-disc type on each axle. |
| Rear axle | SAHR park brake.   |

**HYDRAULICS**

|                  |  |
|------------------|--|
| Type             | Variable displacement pump electronically controlled with variable displacement motor. |
| Movement control | 2 servo electric joysticks.  |
| Fluid            | 160 litre hydraulic tank.  |

**OUTRIGGERS**

|      |  |
|------|--|
| Type | 4x telescopic outriggers with one touch auto deploy/level/retract. |
|------|--|

**LOAD MANAGEMENT SYSTEM**

|   |  |
|---|--|
| Full crane style load management system |  |
| 7" screen with rotary controller        |  |
| Envelope limits                         |  |
| 5 configurable speed profiles           |  |

**CARRIAGE**

|                        |                |
|------------------------|----------------|
| Type                   | Q-Fit carriage |
| Attachment recognition | RFID           |

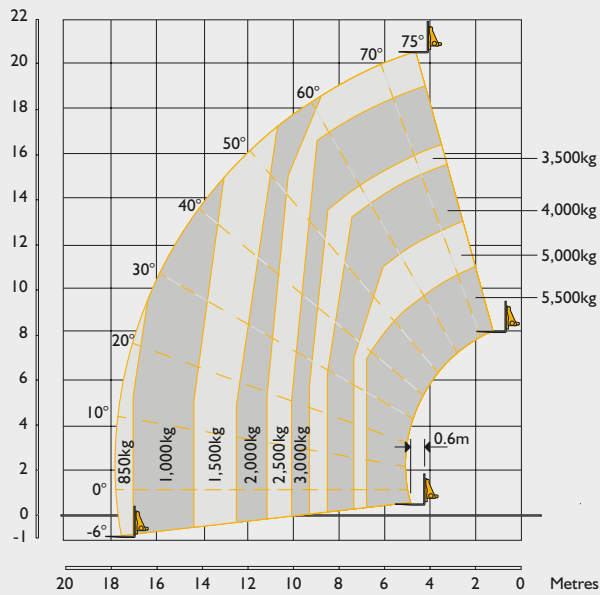
**TYRES**

|      |                |
|------|----------------|
| Type | 445 / 65 R22.5 |
|------|----------------|

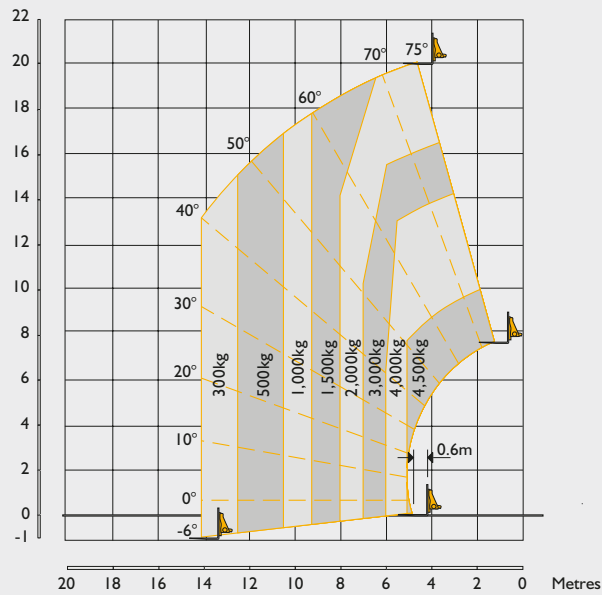
**STANDARD CONFORMITY**

|                  |  |
|------------------|--|
| EN1459-2         |  |
| EN15830          |  |
| EN14401          |  |
| EN280            |  |
| ROPS/FOPS        |  |
| EU Stage IV      |  |
| EPA Tier 4 Final |  |
| ISO10896-2       |  |

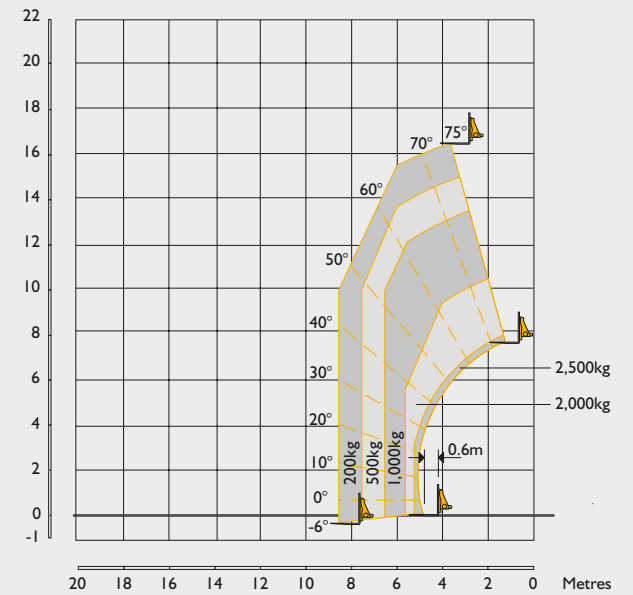
**LIFT PERFORMANCE – FORKS, 360° WITH OUTRIGGERS DEPLOYED**



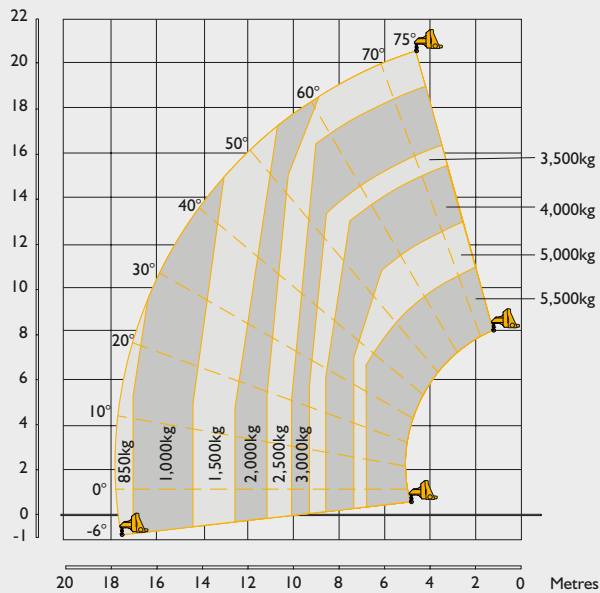
**LIFT PERFORMANCE – FORKS, STRAIGHT AHEAD ON TYRES**



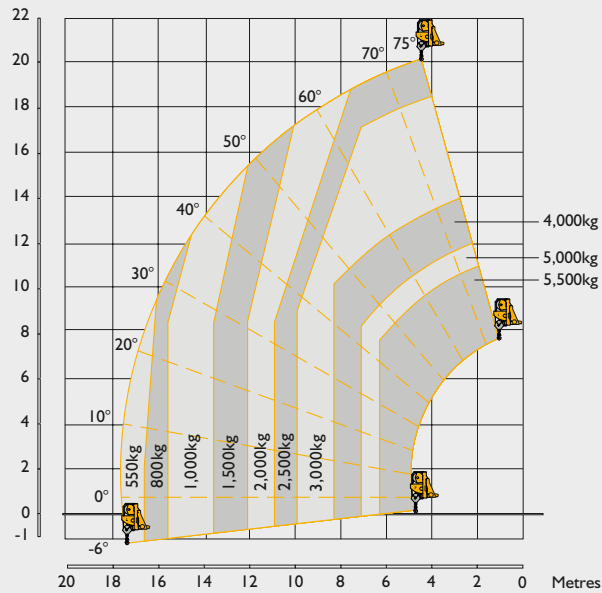
**LIFT PERFORMANCE – FORKS, 360° ON TYRES**



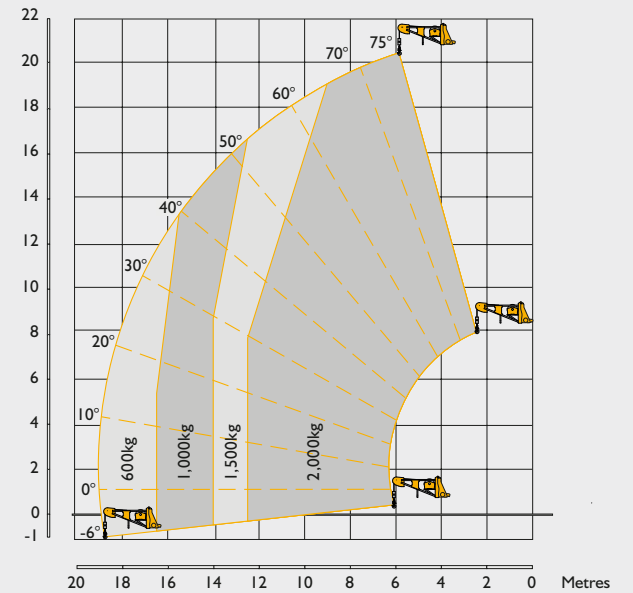
**LIFT PERFORMANCE – 680MM JIB, 360° WITH OUTRIGGERS DEPLOYED**



**LIFT PERFORMANCE – 5.5T WINCH, 360° WITH OUTRIGGERS DEPLOYED**



**LIFT PERFORMANCE – 2-METRE JIB WINCH, 360° WITH OUTRIGGERS DEPLOYED**







**ONE COMPANY, OVER 300 MACHINES.**

Your nearest JCB dealer

**Rotating Telescopic Handler 5.5-21 ROTO**

Gross power: 108kW (145hp) Lift capacity: 5,500kg Maximum lift height: 20.5m

JCB Sales Limited, Rokeceter, Staffordshire, United Kingdom ST14 5JP.

Tel: +44 (0)1889 590312 Email: salesinfo@jcb.com

Download the very latest information on this product range at: [www.jcb.com](http://www.jcb.com)

©2009 JCB Sales. All rights reserved. No part of this publication may be reproduced, stored in a retrieval system, or transmitted in any form or by any other means, electronic, mechanical, photocopying or otherwise, without prior permission from JCB Sales. All references in this publication to operating weights, sizes, capacities and other performance measurements are provided for guidance only and may vary dependant upon the exact specification of machine. They should not therefore be relied upon in relation to suitability for a particular application. Guidance and advice should always be sought from your JCB Dealer. JCB reserves the right to change specifications without notice. Illustrations and specifications shown may include optional equipment and accessories. All images are correct at time of print. The JCB logo is a registered trademark of J C Bamford Excavators Ltd.

