



# H28 TJ+

## Exceptional productivity

- Telescopic jib provides 6 m (19 ft 8 in) additional outreach which is extremely practical for accessing work areas and for getting around obstacles
- 3 simultaneous and proportional movements
- Double load capacity: 350 kg / 772 lbs (3 people) or 230 kg / 507 lbs (2 people)
- Tailswing of 72 cm / 29 in for more compactness

## Optimal rough terrain driving features

- 4 wheel drive
- Rear oscillating axle
- Differential wheel lock
- Ground clearance of 54 cm / 22in



[www.haulotte.com](http://www.haulotte.com)

**Haulotte**   
GROUP

More than lifting



# H28 TJ+

TELESCOPIC BOOM LIFTS

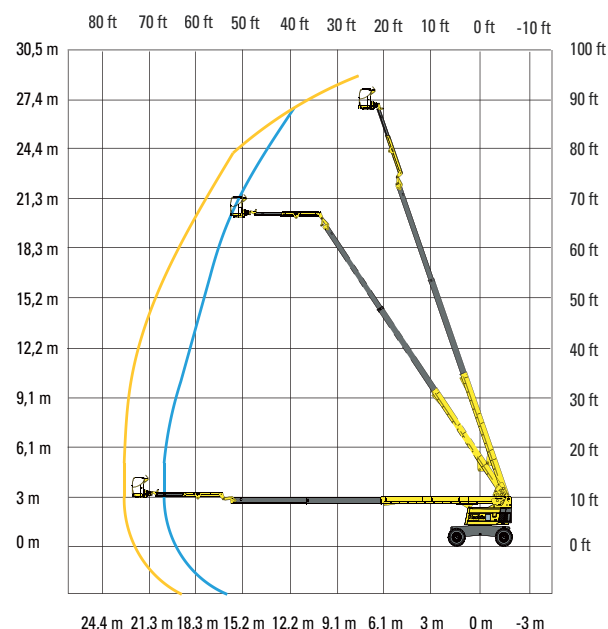
## TECHNICAL DATA

### H28 TJ+

Working height	27.5 m
Platform height	25.5 m
Horizontal outreach	22.6 m
Lift capacity	230 - 350 kg
<b>F x G</b> Platform size	1.8 x 0.8 m
<b>A</b> Length	12.35 m
<b>H</b> Length - transport	9.45 m
<b>B</b> Overall width	2.49 m
<b>C</b> Height - stowed	2.95 m
<b>J</b> Height - transport	2.95 m
Vertical jib rotation	133° (+63/-70)
Platform rotation	180° (+90/-90)
Boom rotation angle	70 °
Turntable rotation	360 °
Tailswing	72 cm
<b>D</b> Wheelbase	3 m
<b>E</b> Ground clearance	52 cm
Tilt	4 °
Drive speed	0.5 - 5 km/h
Gradeability	40 %
Turning radius - outside	7.45 m
Tires - foam-filled	18-625
Engine	55 kW - 74.7 hp
Weight	17300 kg

230 kg / 2x

350 kg / 3x



## STANDARD EQUIPMENT

- Vertical telescopic fly jib
- 3 section telescopic boom which lowers onto the turntable when parked
- Telescopic jib in high elastic modulus steel and with octagonal cross section for rigidity
- The fixed-width frame allows the machine to be rapidly installed on site
- Hydrostatic transmission
- Automatic platform levelling
- Maintenance made easy: swing out engine tray
- Gull wing style cowlings
- Safe to use in winds up to 45km/h / 28mph
- Tilt controller
- Load Management System in the platform
- Auxiliary power in the platform for emergency descent
- Horn
- Hourmeter

## OPTIONS AND ACCESSORIES

- Rotating beacon
- Travel alarm
- Working light
- Power to platform
- On-board generator
- Biodegradable hydraulic oil
- Large platform 2.44 x 0.8m

